

1412

1998

SECTION II / MECHANISMS OF GENETICAL EXPRESSION

LARRY SIMPSON

*Howard Hughes Medical Institute and Departments
of Molecular, Cellular, and Developmental Biology
and Medical Microbiology and Immunology
University of California at Los Angeles
Los Angeles, California 90095, USA*

RNA editing is a term used to describe a diverse set of phenomena in which mRNA, rRNA, and tRNA transcripts are modified in sequence after transcription. The types of RNA editing vary from uridine (U) or cytidine (C) insertions and deletions within coding regions of mitochondrial mRNAs to the substitution of specific C residues with U residues in plant mitochondrial mRNAs or the substitution of specific A residues with I residues in mammalian nuclear-encoded mRNAs. The modifications are frequently regulated and have significant phenotypic consequences.

RNA Editing

The Discovery of RNA Editing Brought into Question the Central Dogma of Molecular Genetics

One of the basic tenets of molecular genetics is that the nucleotide sequence in the messenger RNA should be a perfect copy of the sequence in the DNA, as determined by the rules of base pairing. The first challenge to this idea came with the discovery of intervening sequences within genes of higher organisms which are precisely spliced out of the mRNA, and the coding RNA fragments, or exons, are then joined together to create the complete gene. This discovery did not really contradict the idea that the mRNA sequence is a copy of the DNA sequence since the exons do represent perfect copies.

However, evidence obtained in the past decade with an ancient group of parasitic flagellated protozoa, the kinetoplastids, indicates that the sequence of nucleotides in mRNAs in coding regions can be modified after transcription in quite dramatic ways, a phenomenon known as RNA editing. These results initially led some people to question the central dogma of molecular genetics, which states that genetic information flows from DNA \leftrightarrow RNA \rightarrow protein, since the genetic information for the sequence changes in the mRNAs and hence the sequence of amino acids in the proteins did not appear to be encoded in the nucleic acids of the organism. These results can now be explained in terms of a model which is consistent with the central dogma but yet has some novel and interesting features.

Other examples of nonencoded sequence modifications

LARRY SIMPSON

of RNAs in other organisms were also reported and were also termed RNA editing, although the mechanisms appear to be quite distinct. In some cases, the site specificity of the editing events can be explained in terms of proteins that recognize specific RNA sequences or RNA structures, but in other cases the site specificity is a mystery.

A Personal History of the Investigation of RNA Editing in Trypanosomes

Trypanosomes

Trypanosomes belong to a large group of parasitic protozoa known as kinetoplastid protozoa. The term trypanosome or trypanosomatid is actually the name for cells belonging to the genus *Trypanosoma* in this family, but it is loosely used to describe any kinetoplastid protozoan. The name kinetoplastid was derived from the fact that early investigators saw a small granule or *kinetoplast* at the base of the flagellum when they stained cells with certain dyes. The kinetoplast actually represents a portion of the single complex mitochondrion of the cell that contains a huge compact mass of mitochondrial DNA, which is what stains with dyes.

Trypanosomes are both repelling and fascinating. Several species are dangerous human parasites, causing such diseases as African sleeping sickness, Chagas's disease, and leishmaniasis, a skin ulceration that in some cases can metastasize to the mouth and nose and cause considerable damage. There is no vaccine for any of these diseases and the treatments, when they exist, are not very satisfactory. In Africa, domestic cattle (but not wild animals) succumb to a trypanosome species transmitted by the tsetse fly, and even coconut palms are affected by one type of trypanosome, *Phytomonas*. In fact, most of the early work on trypanosomes was done by medical doctors interested in the diseases. However, many trypanosome species are only parasites of insects and have no medical significance. Others are parasites of both insects and vertebrates.

Trypanosomes are fascinating to the modern cellular and molecular biologist since they represent one of the most primitive lines of descent of eukaryotic cells. Perhaps for this reason, they possess many truly unusual features not found in other eukaryotic cells. For example, the trypanosomes have only a single mitochondrion which contains a truly unique type of mitochondrial DNA known as kinetoplast DNA. All modern-day eukaryotic unicellular organisms whose ancestors arose prior to the ancestors of trypanosomes, such as *Giardia* and *Trichomonas*, lack mitochondria and therefore do not respire oxygen. It is possible that the lineage which gave rise to the Euglenozoa flagellated protozoa (which includes the kinetoplastid protozoa and also *Euglena*, a green flagellated protozoan) approximately 1 billion years ago was very closely related to that primitive ancestral cell which engulfed a respiring bac-

terial cell to create the obligate intracellular organelle now known as the mitochondrion.

Kinetoplast DNA

I became interested in the unusual mitochondrion of trypanosomes as a graduate student. At that time, all that was known was that this mitochondrion contained a large compact mass of DNA known as kinetoplast DNA that stained well with certain dyes. Our model system was the nonpathogenic trypanosome, *Leishmania tarentolae*, which was originally a parasite of a gecko. We and others soon showed that this DNA consists of thousands (5000–10,000) of small circular DNA molecules known as minicircles, all linked together by catenation-like rings in a chain forming a giant network of DNA, and a smaller number (20–50) of larger circular DNA molecules known as maxicircles, also linked to the network (Simpson and da Silva, 1971) (Fig. 1). The minicircles, although identical in size in any one species, consist of molecules having different sequences even in the same network. Minicircles range in size from 460 to 2500 bp in different species, and each minicircle is organized into one or more conserved regions and variable regions. A region of the minicircle is inherently bent (Marini *et al.*, 1982), the genetic role of which is still unclear. Minicircles did not appear to encode information for proteins but did replicate very well and have been keeping several labs busy for years trying to elucidate the mechanisms of replication and

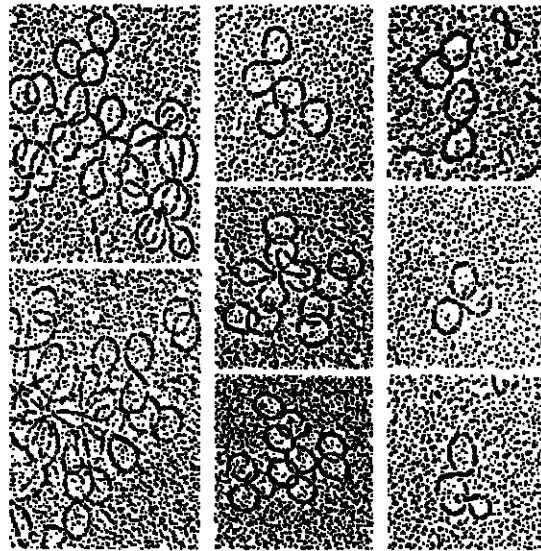


FIGURE 1 Kinetoplast DNA minicircles from *L. tarentolae*. These represent fragments of the single network of catenated minicircles and maxicircles present in the kinetoplast-mitochondrion. The minicircles are approximately 900 bp in size (reproduced with permission from Simpson and da Silva, 1971).

segregation of the network (Ryan *et al.*, 1988; Shapiro and Englund, 1995). The genetic function of minicircles proved elusive and was not solved until the discovery of guide RNAs in 1990 (Blum *et al.*, 1990).

The maxicircle molecule, which ranges in size from 23,000 to 36,000 bp in different species, appears to represent the informational DNA molecule in the mitochondrion and contains several of the same genes found in a human mitochondrial DNA molecule: the large and small mitochondrial ribosomal RNAs, three subunits of cytochrome oxidase, cytochrome b, several subunits of NADH dehydrogenase, a subunit of the F_1-F_0 ATPase, and several unidentified proteins. All of the identified structural genes are involved with electron transport and oxidative phosphorylation in the inner membrane of the organelle, as in human cells.

First Indications of Cryptogenes

It was somewhat disturbing in the mid-1980s that several genes found in human and yeast mitochondrial genomes were apparently not present in trypanosome mitochondria, such as the mitochondrial tRNA genes. The apparent absence of tRNA genes was surprising since all mitochondrial DNA studied until that time contained tRNAs which were involved in mitochondrial protein synthesis. To examine whether some of the minicircle molecules or regions of the maxicircle which we had not yet sequenced encoded tRNAs, we hybridized labeled minicircle and maxicircle DNA to low-molecular-weight RNA isolated from *L. tarentolae* mitochondrial which was separated by electrophoresis in acrylamide and transferred to a filter (Simpson *et al.*, 1989). To our surprise, the only RNA that hybridized was a cluster of 20–30 bands one nucleotide apart that migrated well ahead of the abundant mitochondrial tRNAs, indicating that these RNAs were even smaller than tRNAs; this RNA was such a minor component that we could not even see these bands by staining the gel! We now know that this was our first look at guide RNAs which were contaminating our tRNA preparations, but we had no idea what these transcripts were at that time. It was clear, however, that no mitochondrial tRNAs were encoded in mitochondrial DNA, and therefore it seemed likely that tRNAs were imported into the trypanosome mitochondrion from the cytoplasm, as had been previously suggested for *Tetrahymena* by Suyama (Chiu *et al.*, 1975). This was a heretical idea at the time but is now viewed with more favor due to the existence of *in vivo* and *in vitro* experimental evidence for tRNA importation into mitochondria in several organisms (Tarassov *et al.*, 1995; Hauser and Schneider, 1995; Lima and Simpson, 1996).

There were several other early warning signs that something was unusual about this mitochondrial genome: Two of the genes (*COII* and *ND7*) apparently had an extra or a missing nucleotide which created a reading frameshift

which would terminate translation if not corrected (Hensgens *et al.*, 1984; de la Cruz *et al.*, 1984). These +1 or -1 frameshifts were discovered to be present at the same relative locations in the genes from three trypanosome species from three genera, which we knew were separated by at least 100 million years of evolutionary history. Another problem was that several of the genes lacked AUG methionine codons for initiation of translation. Finally, although the relative localization of genes in the maxicircle genomes of *L. tarentolae* and *T. brucei* was very similar, three genes present in *L. tarentolae* were missing in the maxicircle genome of *T. brucei* (*ND7*, *COIII*, and *A6 = MURF4*) (Fig. 2). These genes were substituted in *T. brucei* by shorter sequences that were relatively rich in G's (Simpson *et al.*, 1987).

Discovery of Editing

The problem was solved and a Pandora's box of additional problems was opened up in 1986 when Benne published a sequence of the *COII* mRNA in the conserved frameshift region and found 4 extra U's that were not encoded in the maxicircle DNA (Benne *et al.*, 1986). The presence of these 4 U's inserted at 3 sites neatly overcame the -1 reading frameshift and allowed the mRNA to be translated. Several other more dramatic examples of this phenomenon of RNA editing were soon uncovered. For example, the *Cyb* mRNA was edited within the 5' end by the insertion of 39 U's at 15 sites, thereby creating 20 new amino acids at the amino end of the protein, including an AUG (methionine) for initiation of translation (Feagin *et al.*, 1988b). Deletions of U's were also found to occur in some genes, such as the *COIII* gene of *L. tarentolae*, although at a lower frequency (Shaw *et al.*, 1988). The word *cryptogene* (hidden gene) was coined to describe genes whose transcripts are edited within coding regions, and that region of the mRNA which is to be edited was termed the *preedited region* (Simpson and Shaw, 1989).

In 1988, Feagin discovered the missing *COIII* gene in *T. brucei*. It was actually there all the time, but it was a truly hidden cryptogene since the transcript was so extensively edited with hundreds of U additions over almost the entire length that the mature edited mRNA was nearly twice the size of the gene (Feagin *et al.*, 1988a). The Stuart laboratory soon found that this was also the case for the other two missing genes in *T. brucei* (Koslowsky *et al.*, 1990; Bhat *et al.*, 1990). We decided to call this extensive type of editing *pan-editing* (pan = all) compared to the simple internal editing of the *COII* gene and the 5' editing of the *Cyb* gene.

Polarity of Editing

An important insight into the mechanism of RNA editing was gained when it was found that the pan-editing of the *COIII* mRNA of *T. brucei* appeared to occur in an overall 3' to 5' direction (Abraham *et al.*, 1988). This suggested

LARRY SIMPSON

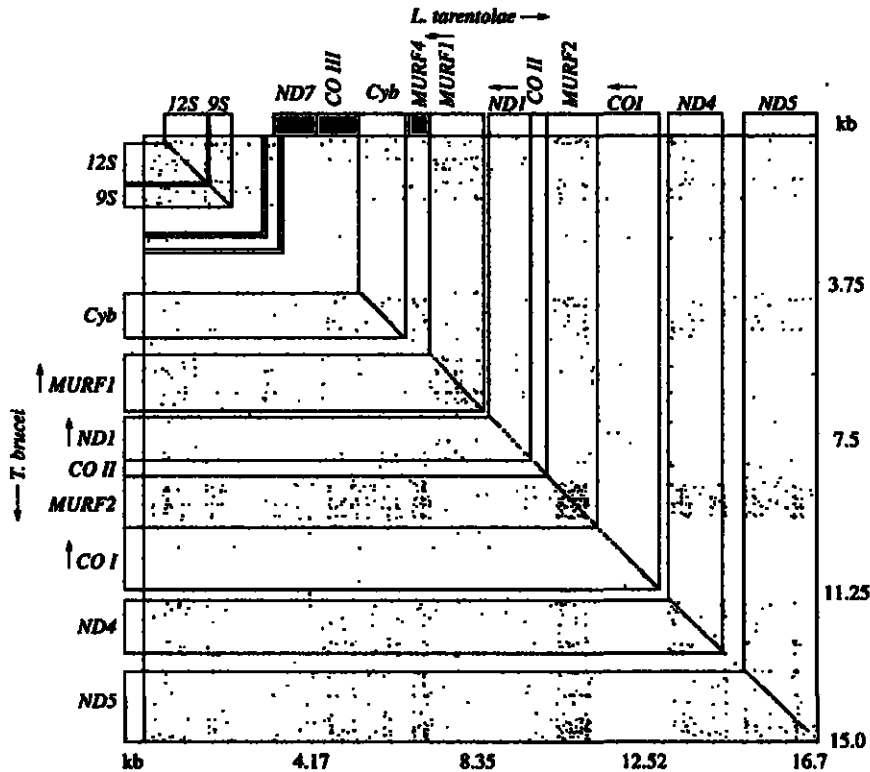


FIGURE 2 Dot matrix comparison of the informational DNA sequences from the maxicircle genomes of *L. tarentolae* and *T. brucei*. The red rectangles indicate the cryptogenes of *T. brucei*. The window was 31 nucleotides and a match of 21 nucleotides was required. ND7, NADH dehydrogenase subunit 7; MURF4, ATPase subunit 6; Cyb, cytochrome b; COI(II), cytochrome oxidase subunit I(II); ND1(4,5), NADH dehydrogenase subunit 1(4,5); MURF1 and MURF2, maxicircle unidentified reading frames (reproduced with permission from Simpson *et al.*, 1987).

that the process occurred after transcription since transcription moves in a 5' to 3' direction, and it explained why partially edited messengers could not be translated — the ribosome binding site was the last sequence to be created by editing. We found the same phenomenon to occur in the 5'-edited genes in *L. tarentolae* (Sturm and Simpson, 1990a). More than 400 partially edited mRNAs from the *Cyb* and *COIII* genes were sequenced that were generated by PCR amplification from mitochondrial RNA, and it was found that the region between the fully edited 3' side and the unedited 5' side of the mRNA, which we term the *junction region*, contained a variety of partially edited sequence patterns. In the case of the *Cyb* RNAs, almost all these patterns could be arranged into a precise 3' to 5' progression of editing (Fig. 3).

However, in the case of *COIII*, only 58% of the patterns showed this precise polarity. The rest showed unexpected editing patterns, in which U's were added at sites not edited

in the mature transcript or U's were added in the 5' region before U's were added in the 3' region. Decker and Sollner-Webb (1990) analyzed partially edited mRNAs for *Cyb* and *COIII* from *T. brucei* and found a high percentage of unexpected patterns in the junction regions for both genes.

The realization that editing occurred after transcription and was both polarized and progressive suggested that a cut-and-splice mechanism was at work. However, the major problem was that there appeared to be no nucleic acid template for this newly added sequence information. It seemed as if sequence information was coming from nowhere and, in the case of pan-edited genes, entire new genes were being constructed. This clearly had profound implications for the central dogma of genetic information transfer.

Discovery of Guide RNAs

We had not given up on the central dogma, which had proven so resilient in the past. A simple computer search

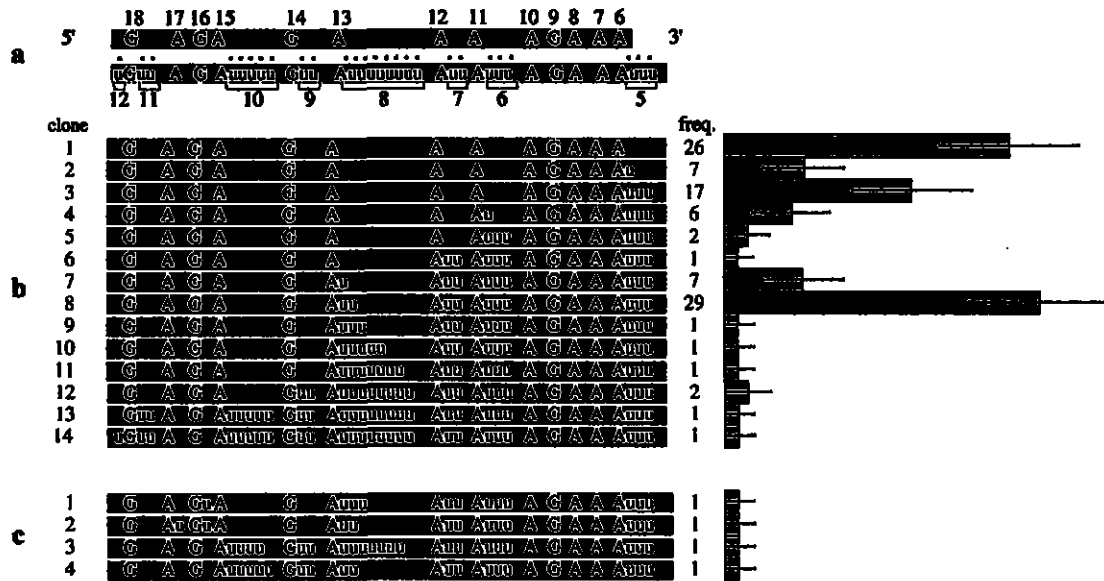


FIGURE 3 (a) Junction regions of mitochondrial RNAs for the gene *Cyb*, preedited (top) and completely edited (bottom). The sequences were obtained by RT-PCR of *L. tarentolae* kinetoplast RNA using a 3' edited primer and a 5' unedited primer. (b) Expected 3' to 5' editing. The different editing patterns (clones) are numbered in editing sequence order with the frequencies of patterns indicated on the right (in green). (c) Unexpected editing patterns (reproduced with permission from Sturm and Simpson, 1990a).

was performed of the known *L. tarentolae* maxicircle that was looking for short DNA sequences that could give rise to RNAs which could hybridize with either entire or portions of known edited RNA sequences. In addition to the classical Watson-Crick base pairs C-G and A-U, we decided to allow for G-U base pairs since these are bona fide base pairs in rRNAs and tRNAs, and this turned out to be the key (Fig. 4).

This computer search immediately found seven short

sequences for four of the known edited genes scattered throughout the maxicircle between known genes (Blum *et al.*, 1990). We soon had definitive evidence for the existence of small RNAs in the mitochondrion which were transcripts of these sequences. These RNAs also contained sequences at their 5' end which could form duplex regions with the mRNAs just downstream of the preedited regions. We termed these sequences the "anchor regions" since these provided an ideal way to anchor the gRNA to

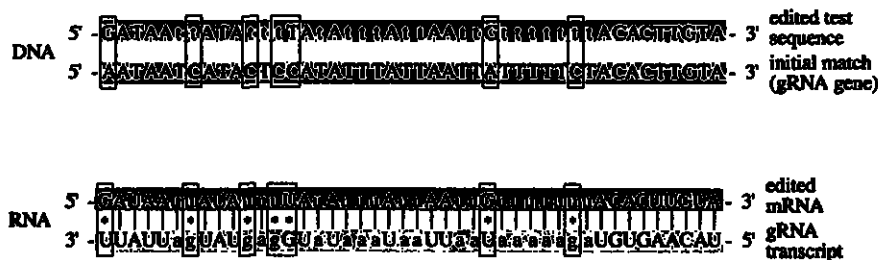


FIGURE 4 Alignment of the edited sequence of *ND7* mRNA with the maxicircle sequence. (Top) The correspondence is shown, as originally observed, between the maxicircle sequence and a test DNA sequence. Transition mismatches are indicated in boxes. (Bottom) The perfect match that can be obtained if the fully edited mRNA (red) is aligned with the complementary RNA sequence of the maxicircle DNA (pink) and G-U base pairs are allowed (rectangles).

LARRY SIMPSON

the mRNA by forming a double-stranded hybrid just downstream of the region that was to be edited.

These small RNAs had an unusual mobility in gel electrophoresis; they migrated in the form of 20–30 bands, each differing by a single nucleotide in size. We immediately realized that these were the same RNAs that had contaminated our tRNA preparations 2 years before (Simpson *et al.*, 1989). The unusual mobility was soon found to be due to the presence of nonencoded oligo-[U] tails up to 24 nucleotides in length at the 3' ends of the RNA molecules (Blum and Simpson, 1990). We called these molecules guide RNAs or gRNAs since they contained the sequence information for editing. Guide RNAs had come to the rescue of the central dogma! We were of course very excited, but at the same time we were somewhat chagrined that the answer to the secret of editing was not something completely new and earthshaking but rather something that obeyed the simple rules of base pairing. However, we still had to explain how these gRNAs could edit mRNA molecules.

At this time, we had identified seven gRNA genes scattered all over the maxicircle with no relation to the cryptogenes for which they encoded information. These gRNAs had information for four of the five known cryptogenes, but we could not find a gRNA for the 5' edited *COIII* gene in *L. tarentolae*. Armed with the knowledge that minicircle DNA showed hybridization to small transcripts with the unusual gel mobility of gRNAs, the known minicircle sequences were searched and a gRNA gene was found in the D12 minicircle that contained sequence information for the first eight editing sites of the *COIII* mRNA (Sturm and Simpson, 1990b) (Fig. 5).

This was the first indication of a genetic function of the minicircle DNA and explained neatly the observed sequence heterogeneity of minicircle DNA: Each sequence class encoded a different gRNA within the variable region. A total of 17 different minicircle sequence classes of differing abundances were detected in the our laboratory strain of *L. tarentolae* by cloning and sequencing (Maslov and Simpson, 1992).

Soon, minicircle-encoded gRNAs were also found in *T. brucei* (Corell *et al.*, 1993; Pollard *et al.*, 1990). One major difference is that each minicircle in *T. brucei* encodes three different gRNAs rather than a single gRNA and the genes are located in the variable region precisely between three sets of 18 nucleotide inverted repeats, which are not present in *L. tarentolae* (Fig. 6). Another difference is that previous workers had shown that there were more than 300 different minicircle sequence classes in *T. brucei* versus the limited number found in *L. tarentolae*. This means that the total number of different gRNAs in *T. brucei* may be more than 900. One characteristic of the gRNAs in *T. brucei* is that they exhibit a large amount of redundancy. Redundant gRNAs have different sequences but contain the same editing in-

formation as a result of allowing G–U base pairs. A high percentage of redundant gRNAs have also been observed in *T. cruzi* (Avila and Simpson, 1995).

Loss of Editing during Culture by Loss of Minicircles

In the initial comparison of the mitochondrial genomes of *L. tarentolae* and *T. brucei*, we noted that there were several stretches of sequences that were relatively rich in G residues (Simpson *et al.*, 1987). Three of these in *T. brucei* were determined to be the three hidden pan-edited cryptogenes, *ND7*, *COIII*, and *MURF4*, but there were an additional six G-rich regions that were located between known genes in both species. The transcript of G-rich region 6 in *L. tarentolae* is pan-edited by the addition of 117 U's at 49 sites and the deletion of 32 U's at 13 sites in three editing domains, producing an mRNA which encodes a protein for the small subunit of the mitochondrial ribosome (Maslov *et al.*, 1992). The remaining G-rich regions, G1–G5, were shown to also be pan-edited cryptogenes in *T. brucei*, but no fully edited transcripts of these genes could be found in the old University of California (UC) lab strain of *L. tarentolae*. The mature edited mRNAs from G1, G2, and G5 in *T. brucei* proved to encode subunits of NADH dehydrogenase (Bhat *et al.*, 1990; Souza *et al.*, 1992, 1993; Read *et al.*, 1992).

Examination of the recently isolated LEM125 strain of *L. tarentolae* suggested that the UC strain was genetically defective in editing of transcripts of the G1–G5 cryptogenes (Thiemann *et al.*, 1994). The LEM125 strain contained fully edited G1–G5 mRNAs and in addition contained a more complex repertoire of minicircle-encoded gRNAs. At least 32 additional minicircle-encoded gRNAs were detected in the LEM125 strain which were absent in the UC strain (Tables 1 and 2). We hypothesized that specific minicircle sequence classes encoding gRNAs for the editing of the G1–G5 transcripts were lost during the long culture history of the UC strain, probably due to a lack of a requirement for the protein products during the culture stage of the *Leishmania* life cycle.

Models for Mechanism of U-Insertion/Deletion Editing

Prior to the discovery of gRNAs, we had isolated an enzyme activity from purified mitochondria of *L. tarentolae* which could add U's to the 3' terminus of any RNA molecule — a terminal uridylyl transferase or TUTase (Bakalara *et al.*, 1989). This enzyme presumably was responsible for the addition of U's to the 3' end of the gRNAs. We also showed the presence of a mitochondrial RNA ligase which could covalently link together two RNA molecules and found that if the TUTase in the crude mitochondrial extract was inhibited by heparin or destroyed by digestion with proteinase K, a cryptic ribonuclease activity was activated

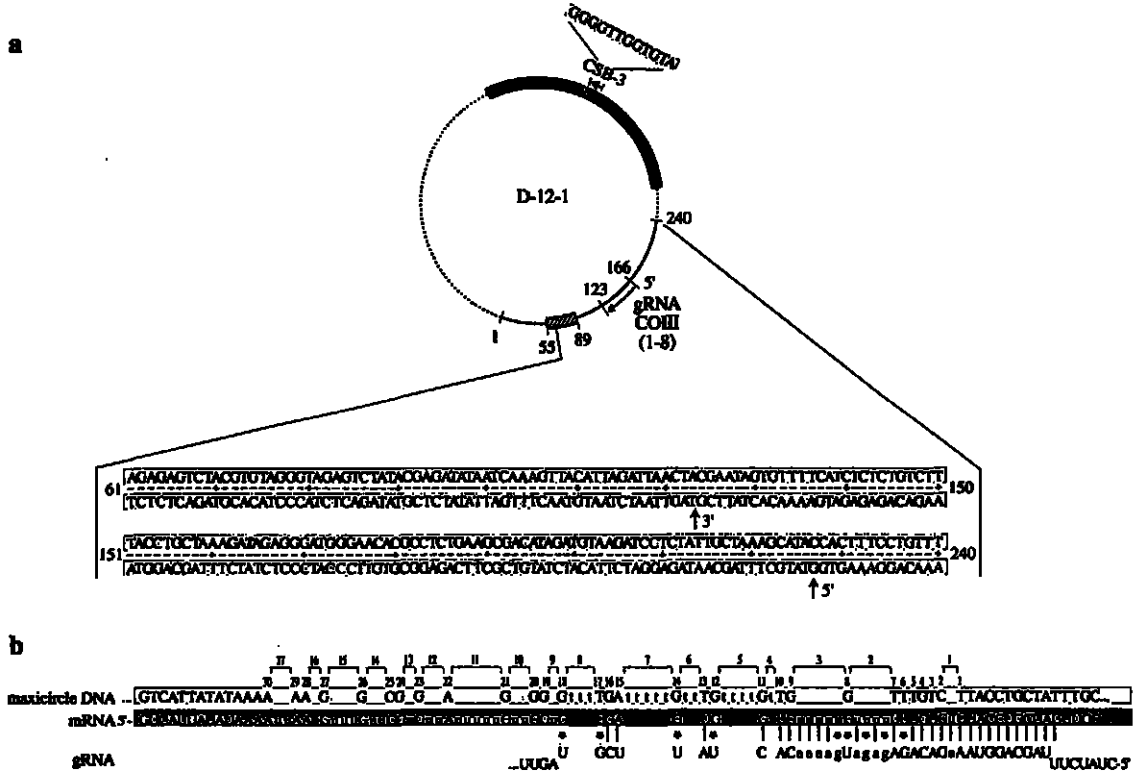


FIGURE 5 Minicircle-encoded gRNAs involved in the editing sites 1–8 of *COIII* mRNA. (a, top) A schematic representation of the D-12-1 minicircle of *L. tarentolae*. The polarity of the gRNA *COIII* gene (long red arrow) is indicated with respect to the conserved dodecamer CSB-3 sequence (shown in the rectangle), an origin of replication for one DNA strand (short red arrow). The blue band on the minicircle indicates the complete conserved sequence. The highlighted bar at the bottom indicates another sequenced region of the minicircle which permitted the determination of the polarity of the gene. (a, bottom) Complete sequence of the 61- to 240-bp region of the minicircle DNA including the possible gRNA sequence coding for the editing sites 1–8 of *COIII* along the D-12-1 minicircle. The red arrows indicate the 3' and 5' ends of the gRNA gene. (b) Edited *COIII* mRNA sequence of *L. tarentolae* (red) aligned with maxicircle DNA *COIII* sequence (blue) and of the gRNA (pink), showing the 17 editing sites and the inserted uridines, indicated as u. Deletions are indicated by asterisks (reproduced with permission from Sturm and Simpson, 1990b).

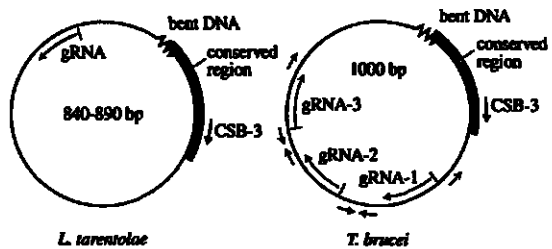


FIGURE 6 Diagrams of genomic organization of minicircles from *L. tarentolae* and *T. brucei*. The locations of the conserved regions and the polarity of the CSB-3 sequence are shown together with the adjacent bent DNA region. The gRNA genes are indicated by orange arrows. In the *T. brucei* minicircle, the gRNA genes are enclosed by imperfect 18mer inverted repeats (gray arrows).

LARRY SIMPSON

TABLE I
Identified gRNAs from *L. tarentolae* UC and LEM125 Strains

CRYPTOGENE	gRNA	DNA code ^a	CRYPTOGENE	gRNA	DNA code ^a
<i>COII</i>	gCOII	Mc (10,120–10,148)	<i>ND7</i>	gND7-I	Mc (16,724–16,752)
<i>COIII</i>	gCOIII-I	mc		gND7-II	Mc (395–346)
	gCOIII-II	mc	<i>ND8</i> (G1)	gND8-I	mc
<i>CyB</i>	gCyB-I	Mc (16,803–16,767)		gND8-II	mc
	gCyB-II	Mc (2,290–2,239)		gND8-III	mc
<i>G3</i>	gG3-I	Mc (17,199–17,215)		gND8-IV	mc
	gG3-II ^b	Mc (14,472–14,445)		gND8-VI	mc
	gG3-III	mc		gND8-VII	mc
<i>G4</i>	gG4-I	mc		gND8-IX	mc
	gG4-II	mc		gND8-X	mc
	gG4-III	mc		gND8-XII	mc
	gG4-IV	Mc (16,881–16,931)		gND8-XIII ^c	Mc (17,364–17,391)
	gG4-V	mc	<i>ND9</i> (G2)	gND9-II	mc
	gG4-VI	mc		gND9-III	mc
	gG4-VIII	mc		gND9-V	mc
	gG4-IX	mc		gND9-VI	mc
	gG4-X	mc		gND9-VII	mc
	gG4-XIV	mc		gND9-VIII	mc
<i>MURF2</i>	gMURF2-I	Mc (9,908–9,893)		gND9-IX	mc
	gMURF2-II	Mc (13,087–13,146)		gND9-XII	mc
<i>MURF4</i> (ATPase 6)	gMURF4-I	mc		gND9-XIV	Mc (219–262)
	gMURF4-II	mc		gND9-XV	mc
	gMURF4-III	mc	<i>RPS12</i> (G6)	gRPS12-I	mc
	gMURF4-IV	mc		gRPS12-II	mc
	gMURF4-V	mc		gRPS12-III	mc
	gMURF4-VI	mc		gRPS12-IV	mc
<i>ND3</i> (G5)	gND3-I	Mc (304–350)		gRPS12-V	mc
	gND3-II	mc		gRPS12-VI	Mc (17,020–16,975)
	gND3-III	mc		gRPS12-VII	mc
	gND3-V	mc		gRPS12-VIII	mc
	gND3-VI	mc	Unassigned	gM150 ^d	Mc (150–102)
	gND3-IX	mc			

^amc, minicircle-encoded gRNA; Mc, maxicircle-encoded gRNA. The position of the gene in the *L. tarentolae* maxicircle (LEIKPMAX) sequence is indicated in parentheses.

^bPutative maxicircle-encoded gRNA for G3 Block II.

^cPutative maxicircle-encoded gRNA for ND8 (G1) Block XIII.

^dPutative gRNA found in a gRNA-mRNA misguided chimera.

which cleaved the *Cyb* preedited mRNA within the preedited region (Simpson *et al.*, 1992). A similar endonuclease activity was detected in mitochondrial extracts from *T. brucei* (Harris *et al.*, 1992).

Armed with the knowledge of the existence of these enzymatic activities in the mitochondrion and the 3' to 5' progression of editing on the mRNA, a model for the role of gRNAs in RNA editing was suggested (Blum *et al.*, 1990). We called this the "enzyme cascade" model since it postulates a series of enzymatic reactions occurring in a multi-enzyme complex bound to the mRNA. We proposed that

the initial interaction involves the formation of an anchor hybrid by the gRNA just 3' of the preedited region on the mRNA. In addition to RNA-RNA interactions involved in the formation of an anchor, we believe that protein factors which were found to be complexed to the gRNAs (Byrne *et al.*, 1995; Bringaud *et al.*, 1995) assist in this initial specific interaction, perhaps by recognizing secondary structures formed by the mRNA or by the gRNA-mRNA hybrid. The next step was proposed to be a specific cleavage at the first mismatched base in the mRNA which liberates a free 3' OH group. This cleaved mRNA fragment would be a substrate

TABLE 2
Guide RNA Complexity in *L. tarentolae* UC and LEM125 Strains

CRYPTOGENE	NUMBER OF gRNAs ENCODED BY		TOTAL (EXPECTED)
	maxicircle DNA	minicircle DNA	
	UC + LEM125	UC + LEM125	
<i>COII</i>	1	0	1
<i>COIII</i>	0	2	2
<i>ND7</i>	2	0	2
<i>Cyb</i>	2	0	2
<i>MURF2</i>	2	0	2
<i>MURF4</i> (A6)	0	6	6
<i>RPS12</i> (G6)	1	7	8
	UC + LEM125	LEM125	
<i>ND8</i> (G1)	1 ^a	9	9 (14)
<i>ND9</i> (G2)	1	8	9 (17)
<i>G3</i>	2 ^b	1	3 (6)
<i>G4</i>	1	9	10 (15)
<i>ND3</i> (G5)	1 ^c	5	6 (9)
Total	13	47	60 (83)

^agND8-XII, a putative maxicircle-encoded gRNA with several mismatches.

^bgG3-II, a putative maxicircle-encoded gRNA which was not detectable by Northern and primer extension analysis.

^cgM150, a putative gRNA found in a gRNA-mRNA misguided chimera.

for the TUTase enzyme which could add one or more U's to the 3' end. These added U's would then base pair with the guide A or G nucleotides in the gRNA, and then the two ends of the mRNA would be relegated by the RNA ligase. This would result in a zipping up of the double helix in a 3' to 5' direction (on the mRNA), and the whole process would then reinitiate at the next mismatched base (Fig. 7).

This model provided an explanation for the 3' to 5' polarity of pan-editing. It indicated that this polarity was due to the creation by the downstream gRNA of an edited mRNA sequence that was complementary to the anchor sequence of the adjacent upstream gRNA (Fig. 8). The model also explained the presence of unexpected editing patterns within the junction regions of partially edited mRNAs. We suggested that these patterns represented normal editing by inappropriate gRNAs or appropriate gRNAs in the wrong location or wrong reading frame—a process which we termed *misediting* and *misguiding*, and which is enhanced by the presence of "wobble" G-U and perhaps A-C base pairs (Sturm *et al.*, 1992). The formation of an anchor hybrid by the wrong gRNA or the formation of a secondary anchor in the wrong location by the correct gRNA could lead to the formation of an unexpected editing pattern, which would terminate the editing process since a correct anchor for the next gRNA would not be formed.

However, misedited sequences within the junction region could be reedited with the correct gRNA. Many examples of misediting/misguiding which are consistent with this hypothesis have been found (Fig. 9). However, another interpretation of unexpected patterns was also proposed (Decker and Sollner-Webb, 1990). It was suggested that editing is completely random and occurs between every nucleotide within an editing domain, and that when the correct sequence is formed it is frozen by the formation of base pairs with the gRNA. This issue will not be resolved until we have a complete knowledge of the total gRNA content of the mitochondrion and can compare all unexpected patterns to known gRNA sequences.

The enzyme cascade model is consistent with most observations, including the known 3' to 5' polarity of editing, but it does not satisfactorily explain the existence of the oligo-[U] tail on the gRNA. The role of the oligo-[U] tail was initially proposed to be a stabilization of the initial hybrid since the U's would form base pairs with the G's and A's in the preedited region (Blum and Simpson, 1990). However, in 1991, we proposed that perhaps the oligo-[U] tail played a more active role and actually was the source of the U's added during editing (Blum *et al.*, 1991). A model was suggested in which the 3' terminal OH of the gRNA attacked a phosphate within the mRNA at the site of the first

LARRY SIMPSON

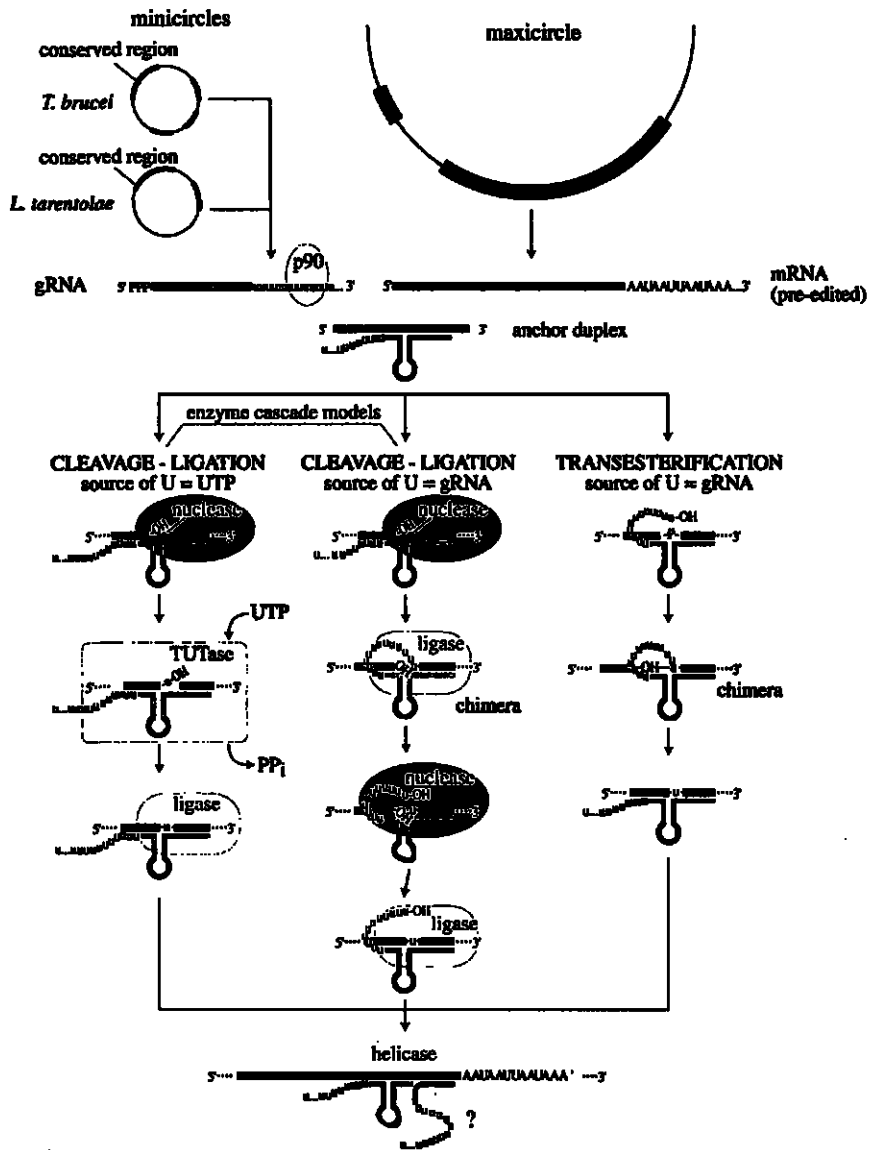


FIGURE 7 Diagram of models of RNA editing in trypanosome mitochondria (reproduced with permission from Simpson and Thiemann, 1995).

mismatch between the gRNA and mRNA, resulting in a transesterification and the exchange of the OH for the phosphate (see Fig. 7). The chemistry of this reaction is similar to that which occurs in self-splicing of RNA molecules in other cells. A similar transesterification model was independently proposed by Cech (1991). A prediction of this

model is the existence of intermediate chimeric molecules which consist of gRNAs covalently linked to mRNAs at editing sites by the 3' oligo-[U] tail. We searched for and found these chimeric molecules for three genes (Blum *et al.*, 1991). This was gratifying but did not prove the transesterification model since chimeric molecules could possibly be

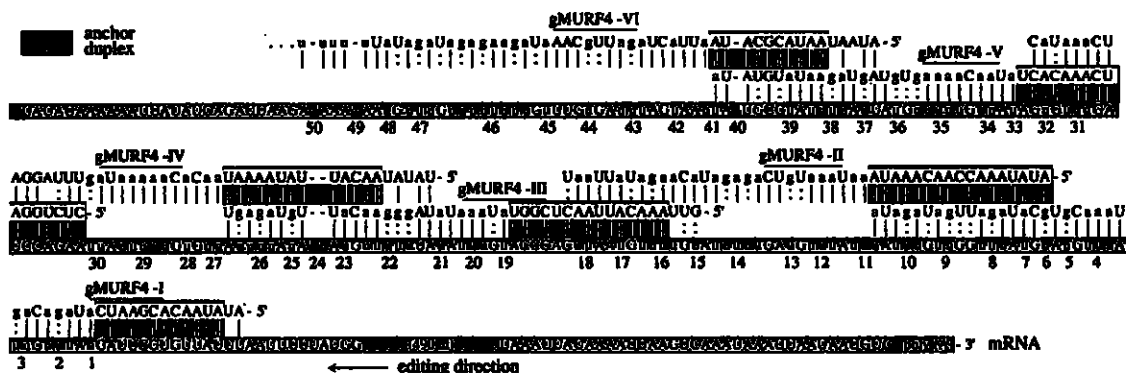


FIGURE 8 Six overlapping gRNAs mediate editing of the *MURF4* (= A6) mRNA. The editing sites are numbered from the 3' to the 5' end. The gRNA-mRNA anchor duplexes are indicated in green. Canonical base pairs are shown by vertical bars and G-U base pairs by colons (reproduced with permission from Maslov and Simpson, 1992).

formed in other ways, especially in a system which we already knew contained a cleavage activity and an RNA ligase activity (see Fig. 7).

The transesterification model was theoretically attractive since it employs the same chemistry and the same type of guide sequences used in the well-understood self-splicing of introns, whereas the enzyme cascade model is a novel set of reactions. However, evidence from a gRNA-mediated *in vitro* U-deletion system using a *T. brucei* mitochondrial extract (Seiwert *et al.*, 1996) and from an investigation of the stereochemistry of a gRNA-independent *in vitro* U-insertion activity (Frech and Simpson, 1996; Connell *et al.*, 1997) and a gRNA-dependent *in vitro* U-insertion activity using a *L. tarentolae* mitochondrial extract (Byrne *et al.*, 1996) strongly suggest that the chimeras represent dead-end products rather than intermediates of the reaction. This evidence suggests that the mechanism involves a cleavage-ligation reaction mediated by protein enzymes as in the original enzyme cascade model rather than RNA-mediated transesterifications. A complete elucidation of the mechanism, however, awaits the isolation, expression, and reconstitution of the enzymatic components of the editing machinery.

Evolution of U-Insertion/Deletion Editing

The origin and evolution of the U-insertion/deletion type of RNA editing in trypanosomes is an interesting and important topic. gRNA-mediated pan-editing has been found in all trypanosomatid species analyzed (Fernandes *et al.*, 1993; Landweber and Gilbert, 1994; Maslov *et al.*, 1994). The origin of editing was pushed back to the ancestor of the entire kinetoplastid lineage with the discovery of gRNA-mediated editing in *Trypanoplasma borreli*, which

belongs to the *Bodonina* that represents another suborder within the kinetoplastids (Maslov and Simpson, 1994; Lukes *et al.*, 1994). The occurrence of editing in the mitochondrion of *Euglena* is still an open question, although we showed (Yasuhira and Simpson, 1996) that the only mitochondrial gene cloned to date, *COI*, is unedited, and that gRNA-like molecules could not be detected in this organism by 5' end capping with [α - 32 P]GTP and vaccinia virus guanylyl transferase. Since a phylogenetic analysis of the *COI* and the nuclear-encoded *Hsp60* mitochondrial genes indicated a monophyletic origin of the *Euglena* and trypanosome mitochondria (Yasuhira and Simpson, 1996), a definitive demonstration of an absence of editing in *Euglena* mitochondria would indicate that editing is a derived character within the kinetoplastid lineage. A solution to this question awaits the analysis of additional mitochondrial genes from this organism.

Within the kinetoplastid lineages, the limitation of the editing of all known partially edited genes to the 5' portions of editing domains and the presence of pan-edited homologs in related species suggest that 5'-edited cryptogenes, such as the *COIII* and *ND7* genes in *Leishmania* and *Crithidia*, resulted from retroposition of cDNAs of partially edited mRNAs replacing the original pan-edited cryptogenes in the maxicircle genome (Simpson and Maslov, 1994) (Fig. 10). This implies that this type of RNA editing is a labile genetic trait which is easily lost in evolution. The observed loss of multiple minicircle sequence classes encoding gRNAs for the editing of the G1-G5 mRNAs during the prolonged culture history of the UC lab strain of *L. tarentolae* is entirely consistent with this hypothesis (Thiemann *et al.*, 1994). This suggests that there must have been a selective advantage for retention of this genetic system

LARRY SIMPSON

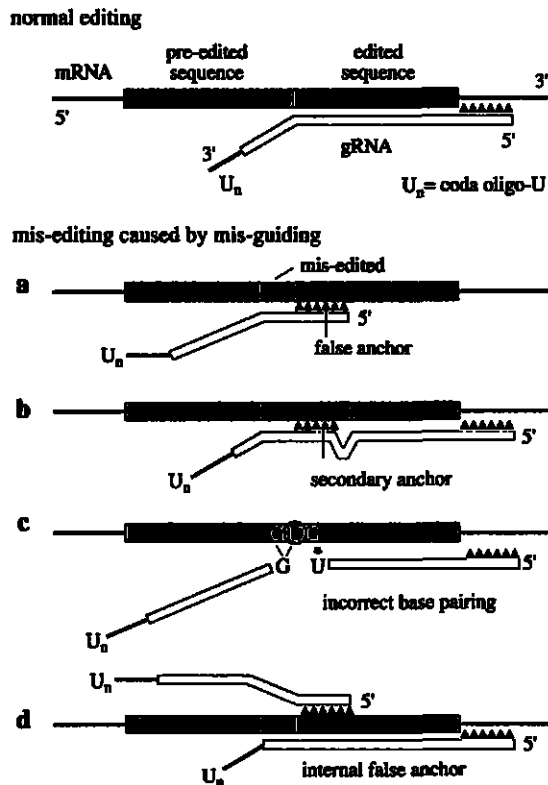


FIGURE 9 Schematic diagrams of normal editing and mis-editing produced by misguiding. The anchors are indicated by triangles and the misedited sequences are indicated by shaded boxes (reproduced with permission from Sturm *et al.*, 1992).

during the evolution of these cells. The selective pressure may be related to the fact that editing, at least in the complex life cycle of *T. brucei*, is regulated (Stuart, 1993). Editing is utilized by these cells as a translational control mechanism to control the biosynthesis of the mitochondrion. However, this does not explain the retention of editing in the monogenetic insect trypanosomes such as *Crithidia*, unless there are occult stages that undergo mitochondrial repression and derepression as in the digenetic African trypanosomes. This remains an open question.

If the mechanism of RNA editing in trypanosomes is determined to be unique to the parasite and not present in the human cell, then this pathway would be an excellent target for chemotherapy. Drugs which could selectively affect editing enzymes could theoretically kill the parasites without affecting the human host. It is hoped that the practical spin-off of this research on this bizarre genetic phenome-

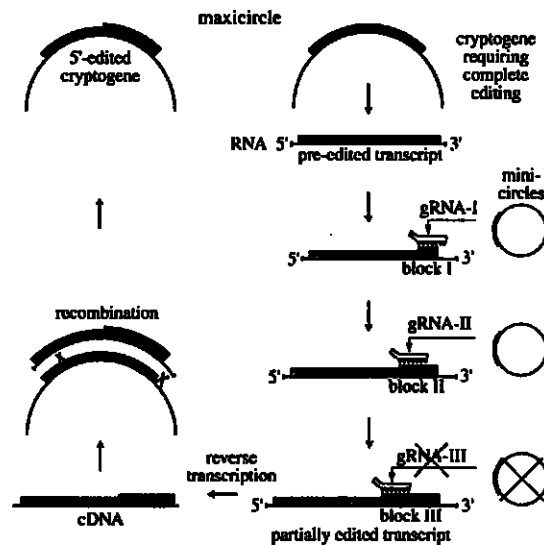


FIGURE 10 Model for the evolution of cryptogenes and the loss of RNA editing in kinetoplastid mitochondria. The primary transcript (preedited) is edited by the first three overlapping gRNAs. The edited sequences are represented by the dark boxes. The cDNA for the partially edited transcript replaces the original cryptogene in one of the maxicircles by homologous crossing over. If the minicircle class encoding one of the three gRNAs is lost, cells lacking the substituted cryptogene could not edit this transcript and this may be lethal. Cells with a substituted cryptogene would have a selective advantage (reproduced with permission from Simpson and Maslov, 1994).

non may someday prove useful in treatment of the many trypanosome-caused human and animal diseases in Third World countries.

RNA Editing Is Used to Describe a Diverse Set of Phenomena in Different Organisms in which RNA Molecules Are Modified in Sequence after Transcription

An even more complex type of insertional editing has been reported for mitochondrial transcripts from the acellular slime mold, *Physarum* (Gott *et al.*, 1993; Mahendran *et al.*, 1994). In this organism, all transcripts of the mitochondrial genome, including rRNAs, tRNAs, and mRNAs, are modified mainly by the insertion of C's but also by the insertion of U, G, and A nucleotides, dinucleotide insertions, and even C to U substitutions. Little is known about the mechanism or mechanisms of these editing events.

Another type of editing was discovered in a mammalian nuclear gene for apolipoprotein B and also in plant mitochondria and chloroplasts, in which C's are changed to U's

at precise sites (Hiesel *et al.*, 1989; Covello and Gray, 1989; Gray and Covello, 1993). This was termed *substitutional* editing to distinguish it from the insertion/deletion type of editing in trypanosomes and *Physarum*. The C → U changes appear to involve a deamination of existing C nucleotides, but the way in which this is limited to multiple specific sites in the genome is not well understood, except in the case of the single apoB editing event in which specific proteins recognize short DNA sequences adjacent to the editing site (Backus and Smith, 1992, 1994).

Substitutional editing of tRNAs was also found to occur in mitochondria of the lower eukaryote, *Acanthamoeba castellanii*, and in mitochondria of land snails: Single mismatched nucleotides within the acceptor stem were substituted by nucleotides which could form base pairs (Loneragan and Gray, 1993). In mitochondria of marsupials and rats, a unique type of substitutional editing of tRNA was reported in which a single C to U change occurred within or near the anticodon sequence (Morl *et al.*, 1995).

Another class of substitutional editing was found to occur in several glutamate receptor mRNAs in humans and involves the deamination of A residues into I residues, which are treated by the translational machinery as G residues. The A to I type of editing of the glutamate receptor mRNA in mammals was discovered in an unusual way. Initially, an enzyme activity was described which could unwind double-stranded RNAs by changing A into I residues (Bass and Weintraub, 1988). A double-strand RNA adenosine deaminase (dsRAD or DRADA) which catalyzes the deamination of A into I has been purified and the gene cloned (Kim *et al.*, 1994; Wang *et al.*, 1995). A biological function was finally found for this activity when it was reported that glutamate receptor mRNAs were modified by A to G changes at specific sites, and that the modifications required the formation of an RNA duplex by the foldback of a complementary downstream intron sequence (Higuchi *et al.*, 1993; Maas *et al.*, 1996). Since the translational machinery treats I's as G's, dsRAD was immediately suspected to be the culprit. It now appears that another related adenine deaminase, RED1, is responsible for this specific example of editing (Melcher *et al.*, 1996). However, dsRAD has been implicated in the A to G editing event in hepatitis B delta viral antigenomic RNA. The A to I conversion editing is likely to be quite widespread due to the ubiquity of dsRAD-like activities in higher organisms.

Another modification of RNA, which has been termed editing, involves the addition of G's in mRNAs of certain RNA viruses (Vidal *et al.*, 1990; Pelet *et al.*, 1991; Curran *et al.*, 1991). In several paramyxoviruses a unique P gene gives rise to two mRNAs. One is a faithful copy of the DNA and the other contains one or two extra G's inserted within a run of five or six G's. The resulting frameshifts allow ribosomal access to a second downstream reading frame, re-

sulting in an alternate P protein with a different C-terminal sequence. The addition of G's in the viral mRNAs is probably due to "stuttering" of the RNA during transcription.

Conclusions

The modification of RNA sequences after transcription is a widespread phenomenon among eukaryotic cells and involves several different types of mechanisms. The trypanosome mitochondrial U-insertion/deletion type of editing is apparently unique to the kinetoplastid protozoa. The *Physarum* mitochondrial C-insertion editing has some similarities to the trypanosome editing, but more information is required to make any conclusions. The plant mitochondrial and apo B C to U substitutional editing and the glutamate receptor A to I editing both involve deaminations, but the structural requirements, catalytic mechanisms, and RNA binding sites are different for the two reactions. One common feature between the A to I editing and the U-insertion/deletion editing is a requirement for double-stranded RNA as a recognition element.

The biological importance of the various types of RNA editing is emphasized by the fact that these modifications are frequently regulated and have significant biological phenotypic consequences. It is clear that additional examples of RNA editing will be uncovered in the future, especially as entire genomic sequences of multiple organisms become available.

References Cited

- ABRAHAM, J., FEAGIN, J., and STUART, K. (1988). Characterization of cytochrome C oxidase III transcripts that are edited only in the 3' region. *Cell* 55, 267-272.
- AVILA, H., and SIMPSON, L. (1995). Organization and complexity of minicircle-encoded guide RNAs from *Trypanosoma cruzi*. *RNA* 1, 939-947.
- BACKUS, J. W., and SMITH, H. C. (1992). Three distinct RNA sequence elements are required for efficient apolipoprotein B (apoB) RNA editing *in vitro*. *Nucleic Acids Res.* 20, 6007-6014.
- BACKUS, J. W., and SMITH, H. C. (1994). Specific 3' sequences flanking a minimal apolipoprotein B (apoB) mRNA editing "cassette" are critical for efficient editing *in vitro*. *Biochim. Biophys. Acta* 1217, 65-73.
- BAKALARA, N., SIMPSON, A. M., and SIMPSON, L. (1989). The *Leishmania* kinetoplast-mitochondrion contains terminal uridylyltransferase and RNA ligase activities. *J. Biol. Chem.* 264, 18679-18686.
- BASS, B., and WEINTRAUB, H. (1988). An unwinding activity that covalently modifies its double-stranded RNA substrate. *Cell* 55, 1089-1098.
- BENNE, R., VAN DEN BURG, J., BRAKENHOFF, J., SLOOF, P., VAN BOOM, J., and TROMP, M. (1986). Major transcript of the frameshifted *coxII* gene from trypanosome mitochondria contains

LARRY SIMPSON

- four nucleotides that are not encoded in the DNA. *Cell* 46, 819–826.
- BHAT, G. J., KOSLOWSKY, D. J., FEAGIN, J. E., SMILEY, B. L., and STUART, K. (1990). An extensively edited mitochondrial transcript in kinetoplastids encodes a protein homologous to ATPase subunit 6. *Cell* 61, 885–894.
- BLUM, B., and SIMPSON, L. (1990). Guide RNAs in kinetoplastid mitochondria have a nonencoded 3' oligo-(U) tail involved in recognition of the pre-edited region. *Cell* 62, 391–397.
- BLUM, B., BAKALARA, N., and SIMPSON, L. (1990). A model for RNA editing in kinetoplastid mitochondria: "Guide" RNA molecules transcribed from maxicircle DNA provide the edited information. *Cell* 60, 189–198.
- BLUM, B., STURM, N. R., SIMPSON, A. M., and SIMPSON, L. (1991). Chimeric gRNA-mRNA molecules with oligo(U) tails covalently linked at sites of RNA editing suggest that U addition occurs by transesterification. *Cell* 65, 543–550.
- BRINGAUD, F., PERIS, M., ZEN, K. H., and SIMPSON, L. (1995). Characterization of two nuclear-encoded protein components of mitochondrial ribonucleoprotein complexes from *Leishmania tarentolae*. *Mol. Biochem. Parasitol.* 71, 65–79.
- BYRNE, E., BRINGAUD, F., and SIMPSON, L. (1995). RNA-protein interactions in the ribonucleoprotein T-complexes in a mitochondrial extract from *Leishmania tarentolae*. *Mol. Biochem. Parasitol.* 72, 65–76.
- BYRNE, E. M., CONNELL, G. J., and SIMPSON, L. (1996). Guide RNA-directed uridine insertion editing in vitro. *EMBO J.* 15, 6758–6765.
- CECH, T. R. (1991). RNA editing: World's smallest introns. *Cell* 64, 667–669.
- CHIU, N., CHIU, A., and SUYAMA, Y. (1975). Native and imported transfer RNA in mitochondria. *J. Mol. Biol.* 99, 37–50.
- CONNELL, G. J., BYRNE, E., and SIMPSON, L. (1997). Guide RNA-independent and guide RNA-dependent uridine insertion into cytochrome b mRNA in a mitochondrial lysate from *Leishmania tarentolae*—Role of RNA secondary structure. *J. Biol. Chem.* 272, 4212–4218.
- CORELL, R. A., FEAGIN, J. E., RILEY, G. R., STRICKLAND, T., GUDERIAN, J. A., MYLER, P. J., and STUART, K. (1993). *Trypanosoma brucei* minicircles encode multiple guide RNAs which can direct editing of extensively overlapping sequences. *Nucleic Acids Res.* 21, 4313–4320.
- COVELLO, P. S., and GRAY, M. W. (1989). RNA editing in plant mitochondria. *Nature* 341, 662–666.
- CURRAN, J., BOECK, R., and KOLAKOFSKY, D. (1991). The Sendai virus P gene expresses both an essential protein and an inhibitor of RNA synthesis by shuffling modules via mRNA editing. *EMBO J.* 10, 3079–3085.
- DECKER, C. J., and SOLLNER-WEBB, B. (1990). RNA editing involves indiscriminate U changes throughout precisely defined editing domains. *Cell* 61, 1001–1011.
- DE LA CRUZ, V., NECKELMANN, N., and SIMPSON, L. (1984). Sequences of six structural genes and several open reading frames in the kinetoplast maxicircle DNA of *Leishmania tarentolae*. *J. Biol. Chem.* 259, 15136–15147.
- FEAGIN, J. E., ABRAHAM, J., and STUART, K. (1988a). Extensive editing of the cytochrome c oxidase III transcript in *Trypanosoma brucei*. *Cell* 53, 413–422.
- FEAGIN, J. E., SHAW, J. M., SIMPSON, L., and STUART, K. (1988b). Creation of AUG initiation codons by addition of uridines within cytochrome b transcripts of kinetoplastids. *Proc. Natl. Acad. Sci. USA* 85, 539–543.
- FERNANDES, A. P., NELSON, K., and BEVERLEY, S. M. (1993). Evolution of nuclear ribosomal RNAs in kinetoplastid protozoa: Perspectives on the age and origins of parasitism. *Proc. Natl. Acad. Sci. USA* 90, 11608–11612.
- FRECH, G. C., and SIMPSON, L. (1996). Uridine insertion into pre-edited mRNA by a mitochondrial extract from *Leishmania tarentolae*: Stereochemical evidence for the enzyme cascade model. *Mol. Cell. Biol.* 16, 4584–4589.
- GOTT, J. M., VISOMIRSKI, L. M., and HUNTER, J. L. (1993). Substitutional and insertional RNA editing of the cytochrome c oxidase subunit I mRNA of *Physarum polycephalum*. *J. Biol. Chem.* 268, 25483–25486.
- GRAY, M. W., and COVELLO, P. S. (1993). RNA editing in plant mitochondria and chloroplasts. *FASEB J.* 7, 64–71.
- HARRIS, M., DECKER, C., SOLLNER-WEBB, B., and HAJDUK, S. (1992). Specific cleavage of pre-edited mRNAs in trypanosome mitochondrial extracts. *Mol. Cell. Biol.* 12, 2591–2598.
- HAUSER, R., and SCHNEIDER, A. (1993). tRNAs are imported into mitochondria of *Trypanosoma brucei* independently of their genomic context and genetic origin. *EMBO J.* 14, 4212–4220.
- HENSCGENS, A., BRAKENHOFF, J., DE VRIES, B., SLOOF, P., TROMP, M., VAN BOOM, J., and BENNE, R. (1984). The sequence of the gene for cytochrome c oxidase subunit I, a frameshift containing gene for cytochrome c oxidase subunit II and seven unassigned reading frames in *Trypanosoma brucei* mitochondrial maxi-circle DNA. *Nucleic Acids Res.* 12, 7327–7344.
- HIESEL, R., WISSINGER, B., SCHUSTER, W., and BRENNICKE, A. (1989). RNA editing in plant mitochondria. *Science* 246, 1632–1634.
- HIGUCHI, M., SINGLE, F. N., KÖHLER, M., SOMMER, B., SPRENGEL, R., and SEEBURG, P. H. (1993). RNA editing of AMPA receptor subunit GluR-B: A base-paired intron-exon structure determines position and efficiency. *Cell* 75, 1361–1370.
- KIM, U., WANG, Y., SANFORD, T., ZENG, Y., and NISHIKURA, K. (1994). Molecular cloning of cDNA for double-stranded RNA adenosine deaminase, a candidate enzyme for nuclear RNA editing. *Proc. Natl. Acad. Sci. USA* 91, 11457–11461.
- KOSLOWSKY, D. J., BHAT, G. J., PERROLLAZ, A. L., FEAGIN, J. E., and STUART, K. (1990). The MURF3 gene of *T. brucei* contains multiple domains of extensive editing and is homologous to a subunit of NADH dehydrogenase. *Cell* 62, 901–911.
- LANDWEBER, L. F., and GILBERT, W. (1994). Phylogenetic analysis of RNA editing: A primitive genetic phenomenon. *Proc. Natl. Acad. Sci. USA* 91, 918–921.
- LIMA, B. D., and SIMPSON, L. (1996). Sequence-dependent in vivo importation of tRNAs into the mitochondrion of *Leishmania tarentolae*. *RNA* 2, 429–440.
- LONERGAN, K. M., and GRAY, M. W. (1993). Editing of transfer RNAs in *Acanthamoeba castellanii* mitochondria. *Science* 259, 812–816.
- LUKES, J., ARTS, G. J., VAN DEN BURG, J., DE HAAN, A., OPPERDOES, F., SLOOF, P., and BENNE, R. (1994). Novel pattern of editing regions in mitochondrial transcripts of the cryptobiont *Trypanoplasma borreli*. *EMBO J.* 13, 5086–5098.

- LYE, L.-F., CHEN, D.-H. T., and SUYAMA, Y. (1993). Selective import of nuclear-encoded tRNAs into mitochondria of the protozoan *Leishmania tarentolae*. *Mol. Biochem. Parasitol.* **58**, 233–246.
- MAAS, S., MELCHER, T., HERB, A., SEEBURG, P. H., KELLER, W., KRAUSE, S., HIGUCHI, M., and O'CONNELL, M. A. (1996). Structural requirements for RNA editing in glutamate receptor pre-mRNAs by recombinant double-stranded RNA adenosine deaminase. *J. Biol. Chem.* **271**, 12221–12226.
- MAHENDRAN, R., SPOTTWOOD, M. S., GHATE, A., LING, M.-I., JENG, K., and MILLER, D. L. (1994). Editing of the mitochondrial small subunit rRNA in *Physarum polycephalum*. *EMBO J.* **13**, 232–240.
- MARINI, J., LEVENE, S., CROTHERS, J., and ENOLUND, P. (1982). A novel helical structure in kinetoplast DNA. *Proc. Natl. Acad. Sci. USA* **79**, 7664–7668.
- MASLOV, D. A., and SIMPSON, L. (1992). The polarity of editing within a multiple gRNA-mediated domain is due to formation of anchors for upstream gRNAs by downstream editing. *Cell* **70**, 459–467.
- MASLOV, D. A., and SIMPSON, L. (1994). RNA editing and mitochondrial genomic organization in the cryptobid kinetoplastid protozoan, *Trypanoplasma borreli*. *Mol. Cell. Biol.* **14**, 8174–8182.
- MASLOV, D. A., STURM, N. R., NINER, B. M., GRUSZYNSKI, E. S., PERIS, M., and SIMPSON, L. (1992). An intergenic G-rich region in *Leishmania tarentolae* kinetoplast maxicircle DNA is a pan-edited cryptogene encoding ribosomal protein S12. *Mol. Cell. Biol.* **12**, 56–67.
- MASLOV, D. A., AVILA, H. A., LAKE, J. A., and SIMPSON, L. (1994). Evolution of RNA editing in kinetoplastid protozoa. *Nature* **365**, 345–348.
- MELCHER, T., MAAS, S., HERB, A., SPRENDEL, R., SEEBURG, P. H., and HIGUCHI, M. (1996). A mammalian RNA editing enzyme. *Nature* **379**, 460–463.
- MORL, M., DORNER, M., and PAABO, S. (1995). C to U editing and modifications during the maturation of the mitochondrial tRNA(Asp) in marsupials. *Nucleic Acids Res.* **23**, 3380–3384.
- PELET, T., CURRAN, J., and KOLAKOFSKY, D. (1991). The P gene of bovine parainfluenza virus 3 expresses all three reading frames from a single mRNA editing site. *EMBO J.* **10**, 443–448.
- PILLER, K. J., DECKER, C. J., RUSCHE, L. N., and SOLLNER-WEBB, B. (1995). *Trypanosoma brucei* mitochondrial guide RNA-mRNA chimera-forming activity cofractionates with an editing-domain-specific endonuclease and RNA ligase and is mimicked by heterologous nuclease and RNA ligase. *Mol. Cell. Biol.* **15**, 2925–2932.
- POLLARD, V. W., ROHRER, S. P., MICHELOTTI, E. F., HANCOCK, K., and HAJDUK, S. L. (1990). Organization of minicircle genes for guide RNAs in *Trypanosoma brucei*. *Cell* **63**, 783–790.
- READ, L. K., MYLER, P. J., and STUART, K. (1992). Extensive editing of both processed and preprocessed maxicircle CR6 transcripts in *Trypanosoma brucei*. *J. Biol. Chem.* **267**, 1123–1128.
- RYAN, K., SHAPIRO, T., RAUCH, C., and ENGLUND, P. (1988). Replication of kinetoplast DNA in trypanosomes. *Annu. Rev. Microbiol.* **42**, 339–358.
- SCHNEIDER, A., MARTIN, J., and AGABIAN, N. (1994). A nuclear encoded tRNA of *Trypanosoma brucei* is imported into mitochondria. *Mol. Cell. Biol.* **14**, 2317–2322.
- SEIWERT, S. D., HEIDMANN, S., and STUART, K. (1996). Direct visualization of uridylyate deletion in vitro suggests a mechanism for kinetoplastid RNA editing. *Cell* **84**, 1–20.
- SHAPIRO, T. A., and ENGLUND, P. T. (1995). The structure and replication of kinetoplast DNA. *Annu. Rev. Microbiol.* **49**, 117–143.
- SHAW, J., FEAGIN, J. E., STUART, K., and SIMPSON, L. (1988). Editing of mitochondrial mRNAs by uridine addition and deletion generates conserved amino acid sequences and AUG initiation codons. *Cell* **53**, 401–411.
- SIMPSON, A. M., SUYAMA, Y., DEWES, H., CAMPBELL, D., and SIMPSON, L. (1989). Kinetoplastid mitochondria contain functional tRNAs which are encoded in nuclear DNA and also small minicircle and maxicircle transcripts of unknown function. *Nucleic Acids Res.* **17**, 5427–5445.
- SIMPSON, A. M., BAKALARA, N., and SIMPSON, L. (1992). A ribonuclease activity is activated by heparin or by digestion with proteinase K in mitochondrial extracts of *Leishmania tarentolae*. *J. Biol. Chem.* **267**, 6782–6788.
- SIMPSON, L., and DA SILVA, A. M. (1971). Isolation and characterization of kinetoplast DNA from *Leishmania tarentolae*. *J. Mol. Biol.* **56**, 443–473.
- SIMPSON, L., and MASLOV, D. A. (1994). RNA editing and the evolution of parasites. *Science* **264**, 1870–1871.
- SIMPSON, L., and SHAW, J. (1989). RNA editing and the mitochondrial cryptogenes of kinetoplastid protozoa. *Cell* **57**, 355–366.
- SIMPSON, L., and THIEMANN, O. H. (1995). Sense from nonsense: RNA editing in mitochondria of kinetoplastid protozoa and slime molds. *Cell* **81**, 837–840.
- SIMPSON, L., NECKELMANN, N., DE LA CRUZ, V., SIMPSON, A., FEAGIN, J., JASMER, D., and STUART, K. (1987). Comparison of the maxicircle (mitochondrial) genomes of *Leishmania tarentolae* and *Trypanosoma brucei* at the level of nucleotide sequence. *J. Biol. Chem.* **262**, 6182–6196.
- SOUZA, A. E., MYLER, P. J., and STUART, K. (1992). Maxicircle CR1 transcripts of *Trypanosoma brucei* are edited, developmentally regulated, and encode a putative iron-sulfur protein homologous to an NADH dehydrogenase subunit. *Mol. Cell. Biol.* **12**, 2100–2107.
- SOUZA, A. E., SHU, H.-H., READ, L. K., MYLER, P. J., and STUART, K. D. (1993). Extensive editing of CR2 maxicircle transcripts of *Trypanosoma brucei* predicts a protein with homology to a subunit of NADH dehydrogenase. *Mol. Cell. Biol.* **13**, 6832–6840.
- STUART, K. (1993). RNA editing in mitochondria of African trypanosomes. In *RNA Editing—The Alteration of Protein Coding Sequences of RNA* (R. Benne, Ed.), pp. 25–52. Horwood, New York.
- STURM, N. R., and SIMPSON, L. (1990a). Partially edited mRNAs for cytochrome b and subunit III of cytochrome oxidase from *Leishmania tarentolae* mitochondria: RNA editing intermediates. *Cell* **61**, 871–878.
- STURM, N. R., and SIMPSON, L. (1990b). Kinetoplast DNA minicircles encode guide RNAs for editing of cytochrome oxidase subunit III mRNA. *Cell* **61**, 879–884.

LARRY SIMPSON

- STURM, N. R., MASLOV, D. A., BLUM, B., and SIMPSON, L. (1992). Generation of unexpected editing patterns in *Leishmania tarentolae* mitochondrial mRNAs: Misediting produced by misguiding. *Cell* **70**, 469–476.
- TARASSOV, I., ENTELIS, N., and MARTIN, R. P. (1995). An intact protein translocating machinery is required for mitochondrial import of a yeast cytoplasmic tRNA. *J. Mol. Biol.* **245**, 315–323.
- THIEMANN, O. H., MASLOV, D. A., and SIMPSON, L. (1994). Disruption of RNA editing in *Leishmania tarentolae* by the loss of minicircle-encoded guide RNA genes. *EMBO J.* **13**, 5689–5700.
- VIDAL, S., CURRAN, J., and KOLAKOSKY, D. (1990). A stuttering model for paramyxovirus P mRNA editing. *EMBO J.* **9**, 2017–2022.
- WANG, Y., ZENG, Y., MURRAY, J. M., and NISHIKURA, K. (1995). Genomic organization and chromosomal location of the human dsRNA adenosine deaminase gene: The enzyme for glutamate-activated ion channel RNA editing. *J. Mol. Biol.* **254**, 184–195.
- YASUHIRA, S., and SIMPSON, L. (1995). Minicircle-encoded guide RNAs from *Crithidia fasciculata*. *RNA* **1**, 634–643.
- YASUHIRA, S., and SIMPSON, L. (1996). Phylogenetic affinity of mitochondria of *Euglena gracilis* and kinetoplastids using cytochrome oxidase I and hsp60. *J. Mol. Evol.*

General References

- ARAYA, A., BÉGU, D., and LITVAK, S. (1994). RNA editing in plants. *Physiol. Plant.* **91**, 543–550.
- BASS, B. L. (1993). RNA editing: New uses for old players in the RNA world. In *The RNA World* (R. F. Gesteland and J. F. Atkins, Eds.), pp. 383–418. Cold Spring Harbor Laboratory Press, Cold Spring Harbor, NY.
- BENNE, R. (1994). RNA editing in trypanosomes. *Eur. J. Biochem.* **221**, 9–23.
- SIMPSON, L. (1972). The kinetoplast of the hemoflagellates. *Int. Rev. Cytol.* **32**, 139–207.
- SIMPSON, L. (1986). Kinetoplast DNA in trypanosomid flagellates. *Int. Rev. Cytol.* **99**, 119–179.
- SIMPSON, L. (1987). The mitochondrial genome of kinetoplastid protozoa: Genomic organization, transcription, replication, and evolution. *Annu. Rev. Microbiol.* **41**, 363–382.
- SIMPSON, L., and EMESON, R. B. (1996). RNA editing. *Annu. Rev. Neurosci.* **19**, 27–52.
- SIMPSON, L., MASLOV, D. A., and BLUM, B. (1993). RNA editing in *Leishmania* mitochondria. In *RNA Editing—The Alteration of Protein Coding Sequences of RNA* (R. Benne, Ed.), pp. 53–85. Horwood, New York.